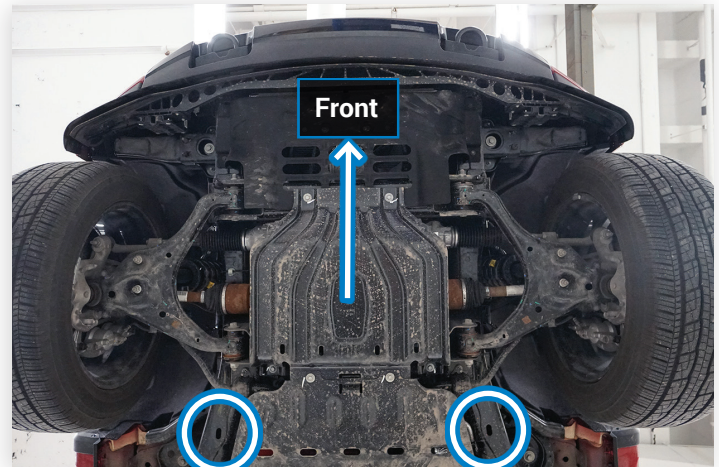


2022 Ford F-150 Lightning EV

Towing & Neutral Mode



Prior to activating Neutral Mode, make all connections to tow vehicle to prevent roll away.



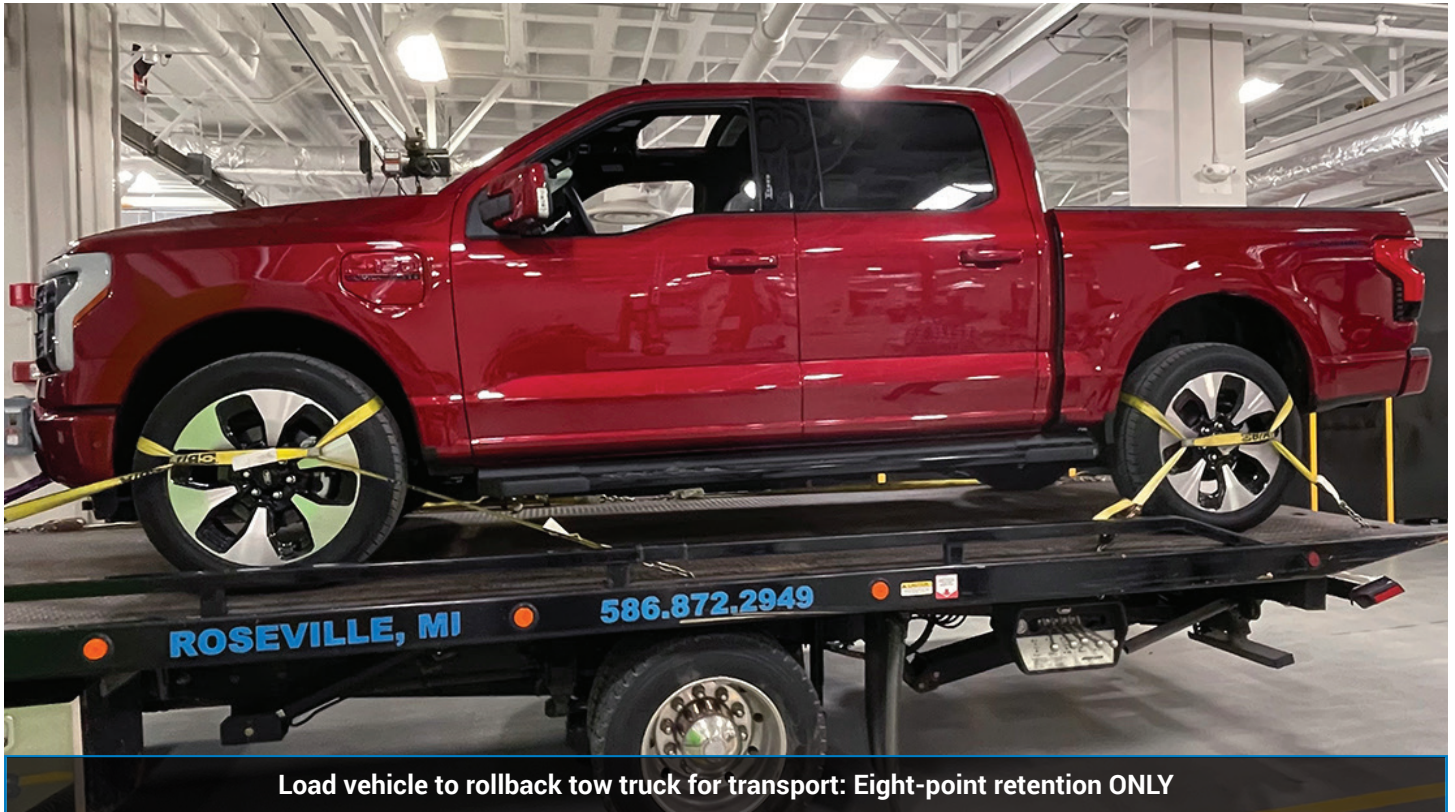
Make connections to the disabled F-150 Lightning at the transport slots in the bottom of the frame behind the sway bar mounts

There are **three** pathways to get the F-150 lightning into neutral.



Check for green READY light in dash cluster





To turn off **Neutral Mode** place vehicle back **Park**
Select Park and set Park Brake during transport