

2022 Ford F-150 Lightning EV

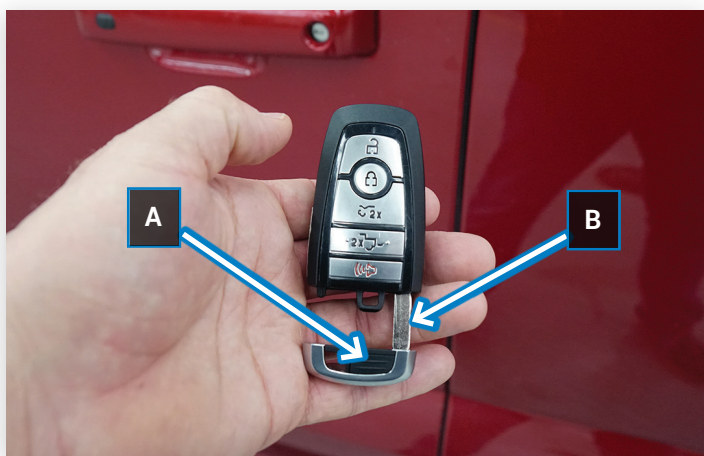
Over the Air (OTA) Update Failure



F-150 Lightning vehicles may fail to update. During these events the vehicle could be rendered inoperable and require towing to a supporting Ford Dealership.

If the vehicle's 12-Volt system is active (charged) and grants access through the driver-side door, proceed to **Towing & Neutral Mode**

Entry and Jump-Starting vehicle with dead 12 Volt Battery



Press button on front of Key Blade (A) to remove mechanical Key Blade (B)



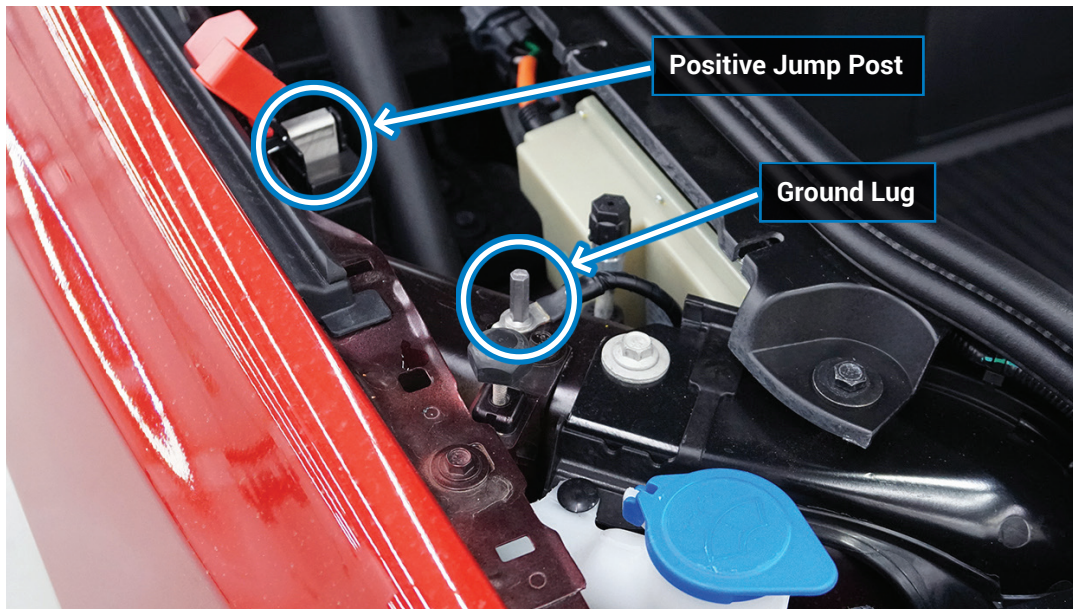
Insert Key Blade in Lock Cylinder. Rotate Clockwise, pull handle to open.



In Driver Side kick panel, pull red tether to open front trunk.



Disengage all 1/4 turn fasteners, turn counterclockwise, remove panel lifting from the rear first.

**Jump Start connection sequence:**

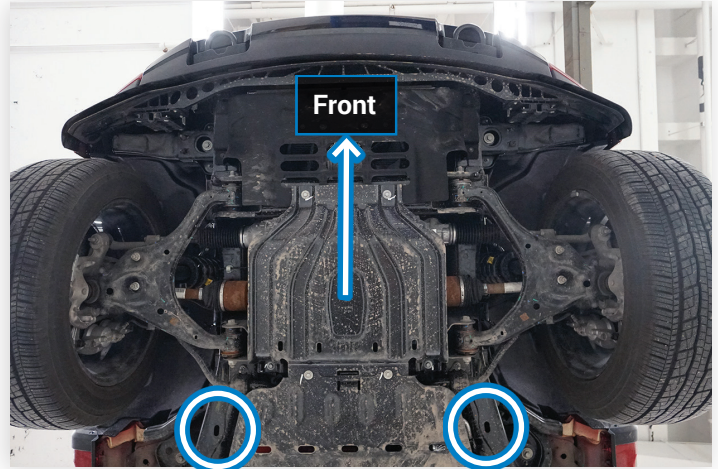
1. Connect to Positive Remote Jump Post of discharged F-150 Lightning
2. Connect to Positive of Donor Vehicle
3. Connect to Negative of Donor Vehicle
4. Connect to Negative Remote Jump Post of discharged F-150 Lightning
5. Verify F-150 Lightning is in Park
6. Allow several minutes for Donor Vehicle to charge 12-Volt of F-150 Lightning
7. Switch on Drive Mode by pressing START button on dash
8. Leave both vehicles connected for 3 minutes

DO NOT TURN ON HEADLIGHTS WHILE DISCONNECTING CABLES, PEAK VOLTAGE CAN DAMAGE THE BULBS

9. Disconnect cables in reverse order

Towing & Neutral Mode

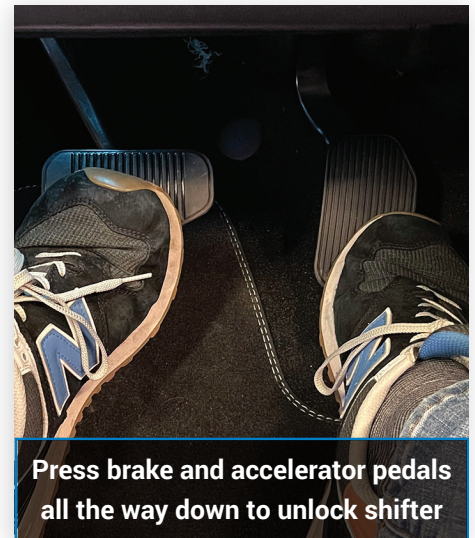
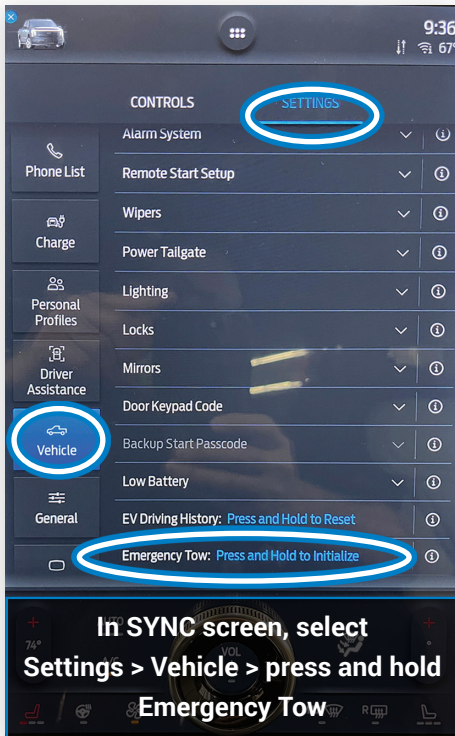
Prior to activating Neutral Mode, make all connections to tow vehicle to prevent roll away.



Make connections to the disabled F-150 Lightning at the transport slots in the bottom of the frame behind the sway bar mounts

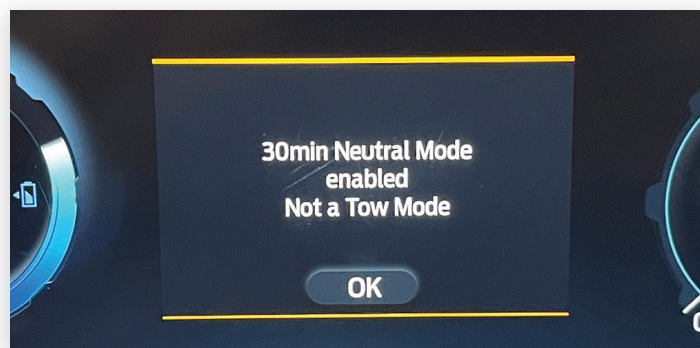
There are **three** pathways to get the F-150 lightning into neutral.

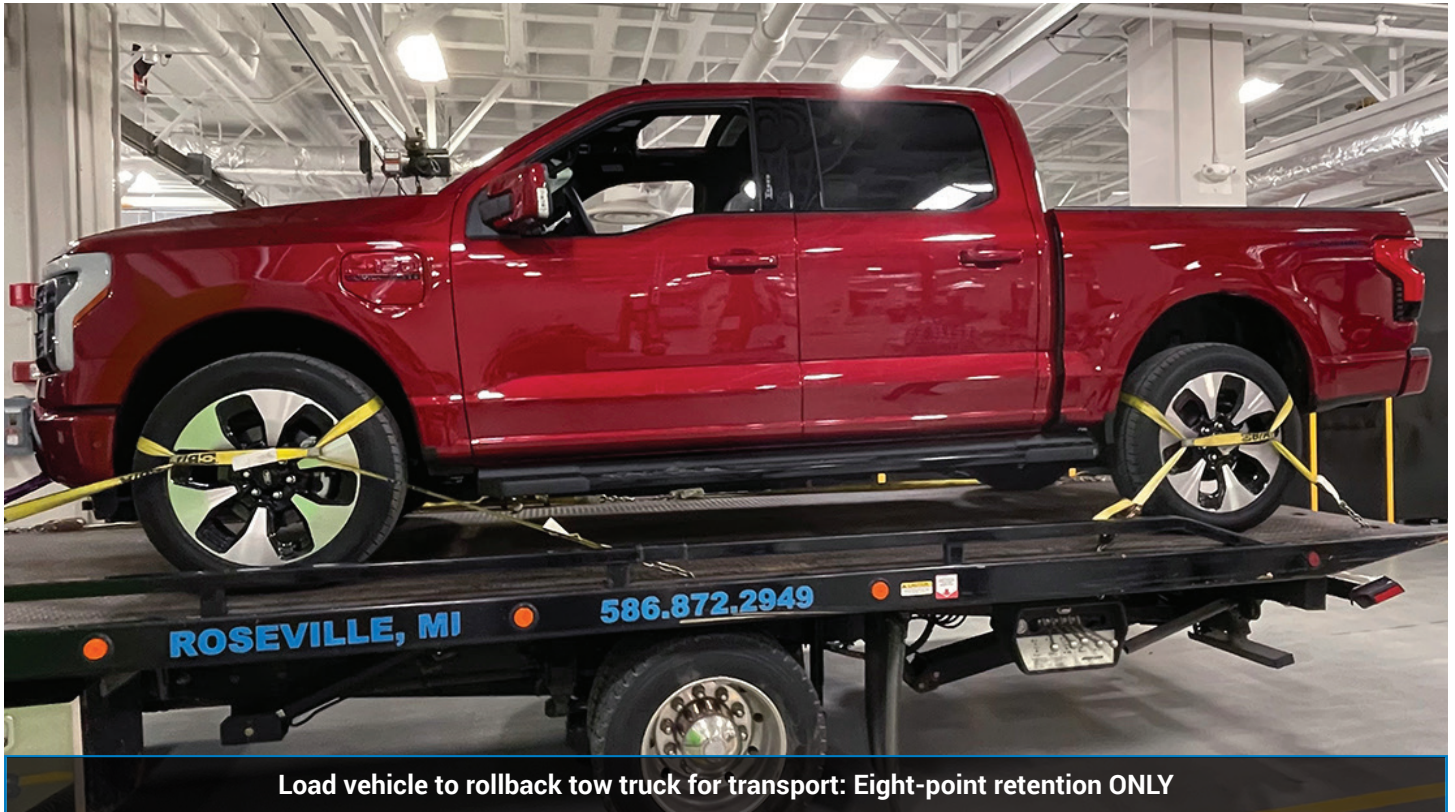




Press brake and accelerator pedals all the way down to unlock shifter

Press brake, shift to Neutral (N), press temporary neutral button twice, turn off vehicle





To turn off **Neutral Mode** place vehicle back **Park**
Select Park and set Park Brake during transport