

# Audi Q8 - Towing

2022-2025

## General Information

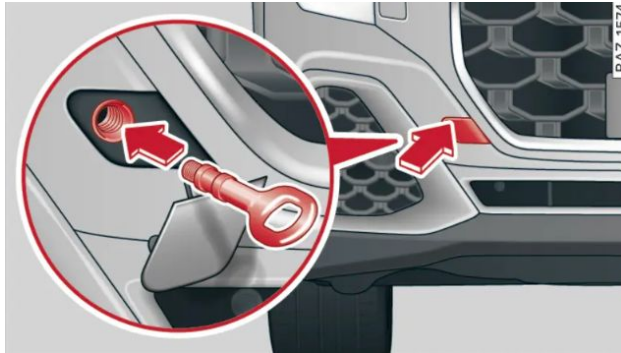
- When the engine is stopped, the transmission will not be sufficiently lubricated if traveling at high speeds and long distances:
  - The maximum permitted towing speed is 30 mph (50 km/h).
  - The maximum permitted towing distance is 30 miles (50 km).
- Additional information on towing with a tow truck
  - The vehicle may only be towed with the front axle raised. Do not wrap any chains or cables around the brake lines.
- Tow bar and towing cable
  - The vehicle can be towed with a tow bar or towing cable. Both persons involved should be familiar with the special considerations when towing, especially when using a towing cable.
- Always make sure the traction force does not exceed the permitted level and there are no shock loading conditions. There is always the risk of the coupling becoming overloaded when driving offroad.
- For the most safety and security, drive with a tow bar. You should use a towing cable only if a tow bar is not available. Use a towing cable made of synthetic elastic cable or a cable made of similar elastic material.

NOTE: We offer these best practices as a courtesy. Network participants remain solely responsible for the appropriate training and management of their personnel, following any and all industry standards for safety, and ongoing compliance with all local, state, federal laws, rules and regulations.

# Audi Q8 - Towing

2022-2025

## Tow Eye



Remove the towing eye from the vehicle tool kit and attach to front or rear of vehicle as shown above

NOTE: We offer these best practices as a courtesy. Network participants remain solely responsible for the appropriate training and management of their personnel, following any and all industry standards for safety, and ongoing compliance with all local, state, federal laws, rules and regulations.