

2022 Wagoneer

Manual Park Release



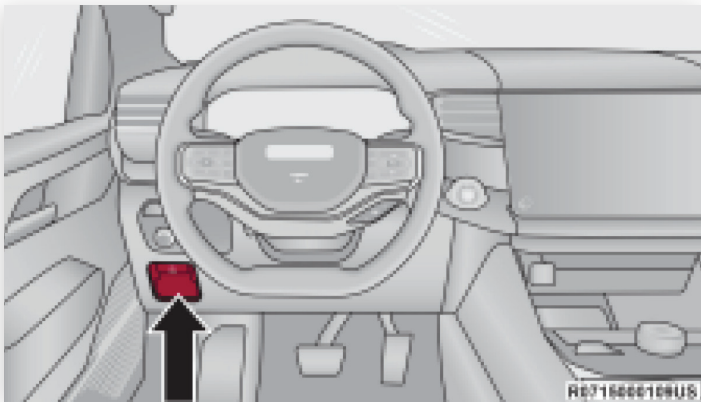
WARNING:

You should be seated in the driver's seat with your foot firmly placed on the brake pedal to maintain control of the vehicle before activating the Manual Park Release. If possible, you should apply the parking brake. Activating the Manual Park Release will allow your vehicle to roll away if it is not secured or properly connected to a tow vehicle. Activating the Manual Park Release on an unsecured vehicle could lead to serious injury or death for those in or around the vehicle.

To move the vehicle in cases where the transmission will not shift out of PARK (P) (such as a depleted battery), a Manual Park Release is available.

FOLLOW THESE STEPS TO ACTIVATE THE MANUAL PARK RELEASE:

- 1 Apply firm pressure to the brake pedal while seated in the driver's seat.
- 2 Apply the Electric Park Brake (EPB), if possible.



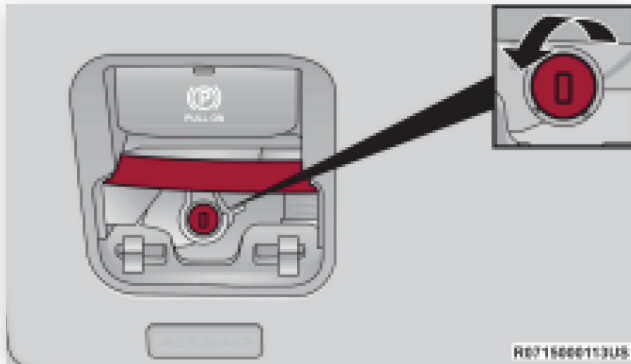
Manual Park Release Location

- 3 Using a flathead screwdriver or similar tool, remove the Manual Park Release access cover, which is to the lower left of the steering column, below the EPB switch.



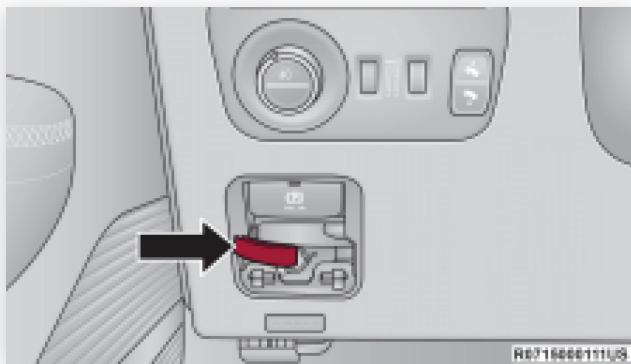
Access Cover

- 4 To unlock handle, insert a flathead screwdriver or similar tool into the lock release, rotate a quarter turn counterclockwise and hold simultaneously pulling on the tether strap.



Lock Release

- 5 Pull the tether strap out as far as it will go, then release it. The transmission should now be in NEUTRAL (N), allowing the vehicle to be moved.

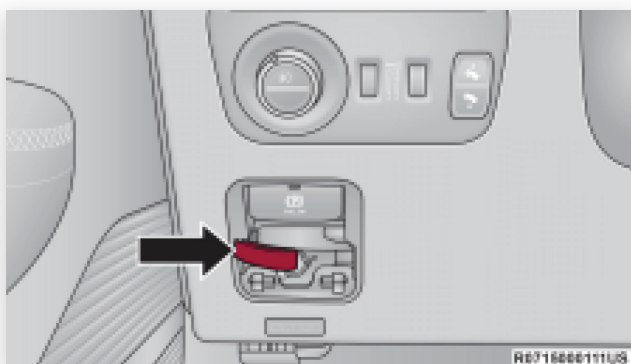


Tether Strap

- 6 Release the EPB only when the vehicle is securely connected to a tow vehicle.

TO RESET THE MANUAL PARK RELEASE:

- 1 Apply firm pressure to the brake pedal while seated in the driver's seat.
- 2 Pull the tether strap out again, then release it.
- 3 Allow the tether to retract with the lever back to its original position.
- 4 Verify that the transmission is in PARK (P).
- 5 Confirm that the tether has retracted fully and reinstall the access cover. If the access cover cannot be reinstalled, repeat steps 1 through 4.



Tether Reninstalled

Note: When the lever is locked in the released position, the tether will remain outside of the trim panel and the access cover cannot be reinstalled.