

2021 Alfa Romeo Stelvio

Tire Changing Procedure

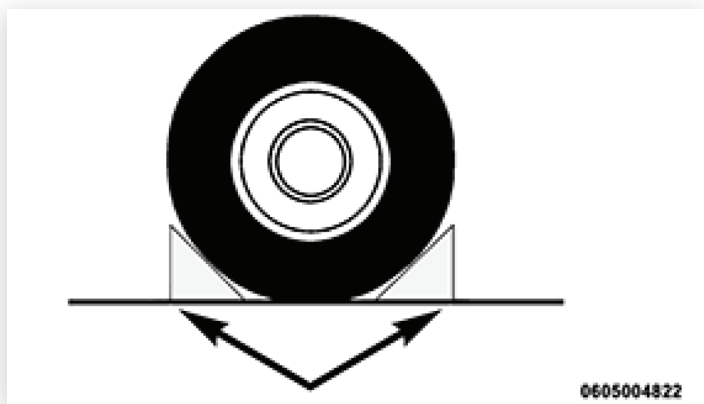


- 1 Park the vehicle on a firm, level surface. Avoid ice or slippery areas.

WARNING:

Do not attempt to change a tire on the side of the vehicle close to moving traffic. Pull far enough off the road to avoid being hit when operating the jack or changing the wheel.

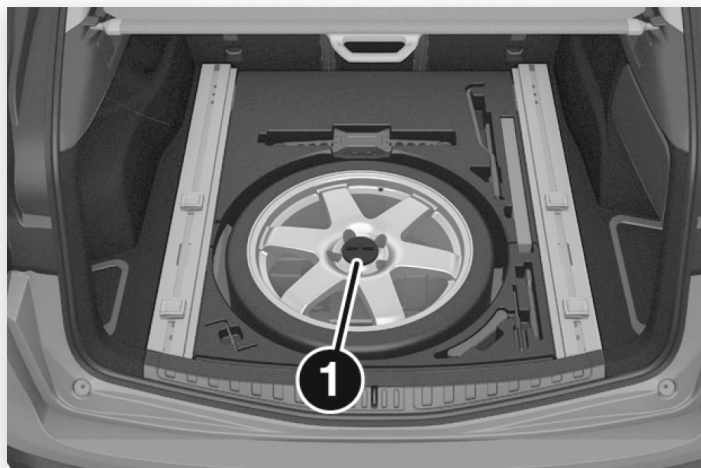
- 2 Turn on the Hazard Warning Flashers.
- 3 Apply the Electric Park Brake.
- 4 Place the gear selector into PARK (P).
- 5 Place the ignition in the OFF mode.
- 6 Block both the front and rear of the wheel diagonally opposite of the jacking position. For example, if changing the right front tire, block the left rear wheel.



Wheels Blocked

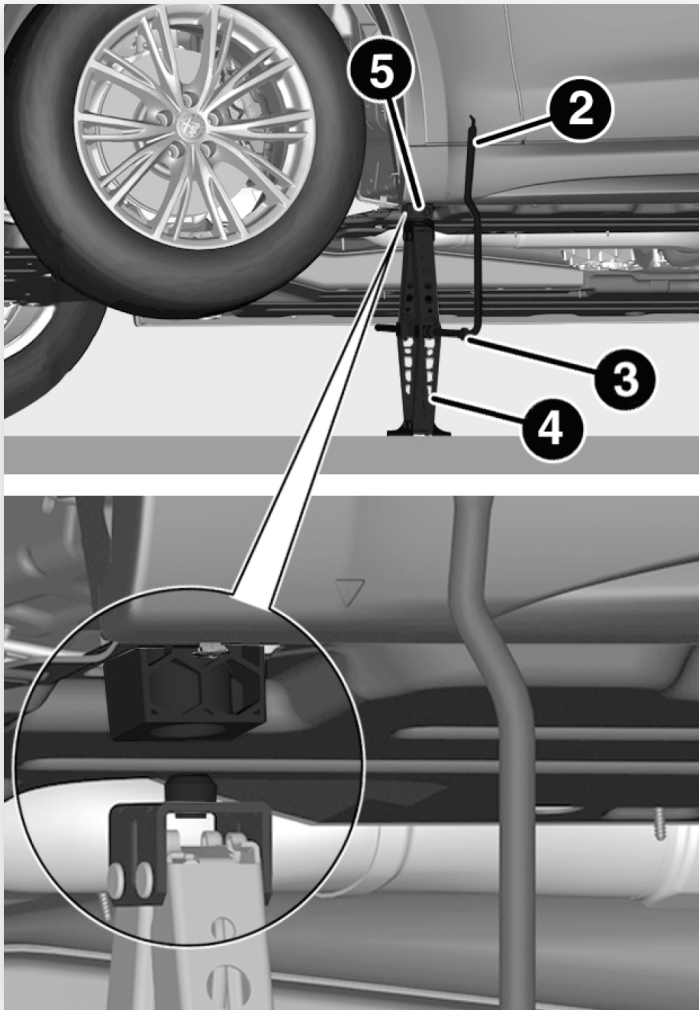
- 7 Open the liftgate and lift up the load floor using the handle.
- 8 Take the warning triangle and position it at a suitable distance from the vehicle to warn oncoming vehicles.
- 9 Unscrew the locking plate and take out the compact spare tire and the air compressor.

1. Locking Plate



Compact Spare Tire — If Equipped

- 10 Remove the damaged wheel by using the wheel wrench to loosen the bolts by one turn.
- 11 Position the jack under the vehicle, near the wheel to be changed, taking care not to damage the plastic body panel.
- 12 Lift the extension lever on the wrench.

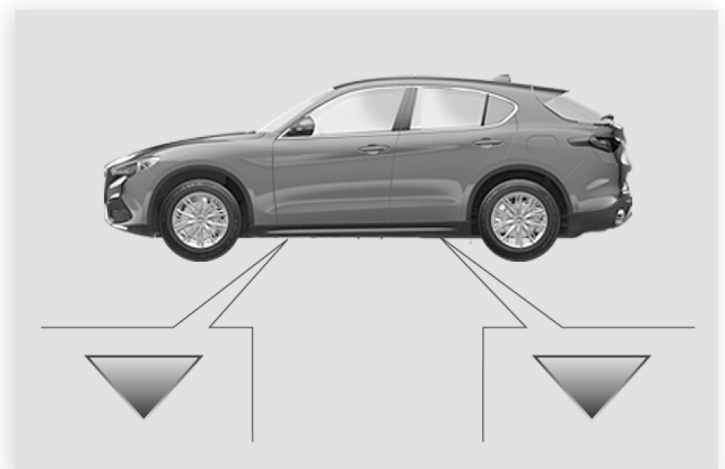


Jacking Location

- 13 Rotate the extension lever clockwise until the round pin on the jack engages in the hole in the lifting block located about 6 inches (15 cm) from the outside edge of the body. The lifting points are marked by triangles visible on the plastic body panel.

CAUTION:

Do not attempt to raise the vehicle by jacking on locations other than those indicated in the Jacking Instructions for this vehicle.



Jacking Point Indicators

- 14 Raise the vehicle by turning the jack screw clockwise, using the swivel wrench. Raise the vehicle only until the tire just clears the surface and enough clearance is obtained to install the compact spare tire. Minimum tire lift provides maximum stability.

WARNING:

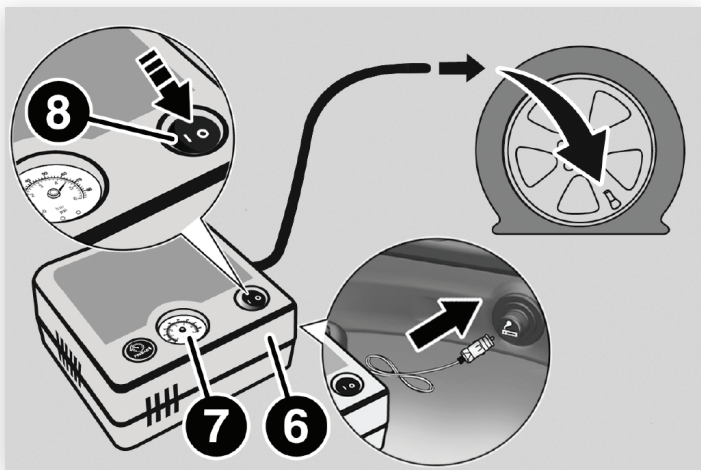
Raising the vehicle higher than necessary can make the vehicle less stable. It could slip off the jack and hurt someone near it. Raise the vehicle only enough to remove the tire.

- 15 Remove the five wheel bolts and take the wheel off.
- 16 Make sure the contact surfaces between compact spare tire and hub are clean so that the fastening bolts will not come loose.
- 17 Fit the compact spare tire by inserting the first wheel bolt for two threads into the hole closest to the valve.

CAUTION:

Be sure to mount the spare tire with the valve stem facing outward. The vehicle could be damaged if the spare tire is mounted incorrectly.

- 18 Take the wheel wrench and tighten the wheel bolts.
- 19 Inflate the compact spare tire by removing the cap from its inflation valve and screwing on the compressor inflation hose fitting.
- 20 Make sure that the switch on the compressor is in the O (off) position, open the liftgate and insert the plug into the power socket in the cargo area, or on the center console and start the engine. Place the on/off switch in the I (on) position.



6. Air Compressor
7. Pressure Gauge
8. Power Button

Attaching Compressor To Tire

- 21 Inflate the compact spare tire to a pressure of 43.5 psi (3 bar).
- Note:** If spare tire is overinflated, be sure to lower the psi in the tire to the recommended amount by using the deflation button on the air compressor.
- 22 Operate the wheel wrench on the jack to lower the vehicle.
- 23 Remove the jack.

- 24 Use the wheel wrench to fully tighten the bolts, passing alternately from one bolt to the diagonally opposite one.

WARNING:

To avoid the risk of forcing the vehicle off the jack, do not tighten the wheel nuts fully until the vehicle has been lowered. Failure to follow this warning may result in serious injury.

To obtain a more accurate reading, it is advisable to check the pressure of the compact spare tire on the pressure gauge with the compressor off.

Note: Do not stow the deflated tire in the compact spare tire location. The compressor was designed for inflating the compact spare tire. Do not use it for inflating mattresses, rafts, etc.

Note: Spare tires are intended for temporary use only. Have the full-sized tire repaired or replaced, as soon as possible.

WARNING:

A loose tire or jack thrown forward in a collision or hard stop could endanger the occupants of the vehicle. Always stow the jack parts and the spare tire in the places provided. Have the deflated (flat) tire repaired or replaced immediately.