

2021 Alfa Romeo Stelvio

Emergency Tire Repair Kit



If a tire is punctured, you can make an emergency repair using the Tire Service Kit located in the rear storage area under the load platform.

- 1 Stop the vehicle in a position where you can repair the tire safely. You should be as far as possible from the side of the road, and in a position that is not dangerous for oncoming traffic. Turn on the Hazard Warning Flashers, remove the safety triangle from the luggage compartment, and place it at a suitable distance from the vehicle to make other drivers aware of your presence.
- 2 Verify that the valve stem (on the wheel with the deflated tire) is in a position that is near to the ground. This will allow the tire repair kit hoses to reach the valve stem and keep the tire service kit flat on the ground.
- 3 Place the gear selector in PARK (P).
- 4 Apply the electric park brake and turn the engine OFF.

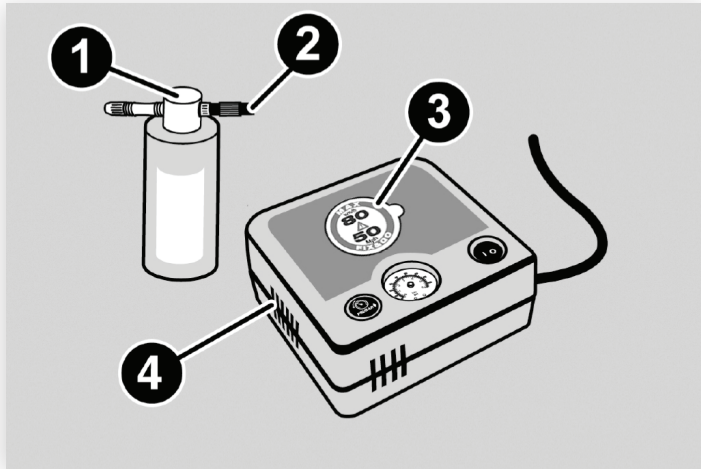
To access the Tire Service Kit, open the liftgate and lift the load floor.



Load Floor

THE TIRE SERVICE KIT CONSISTS OF:

- Sealant cartridge containing the sealing fluid
- Filler Tube
- Air compressor, complete with pressure gauge and connectors
- Adhesive label with the writing "Max. 50 mph (80 km/h)", to be attached in a position easily visible to the driver (e.g. on the dashboard) after repairing the tire
- An instruction pamphlet for reference in prompt and correct use of the Tire Service Kit, which must be then given to the personnel dealing with the sealant-treated tire
- A pair of protective gloves
- Some adapters, for inflating different elements



Tire Service Kit Components

1. Sealant Cartridge
2. Filling Hose
3. Adhesive Label
4. Air Compressor

Note:

- The sealing fluid is effective with external temperatures of between -40°F (-40°C) and 122°F (50°C)
- The sealing fluid has an expiration date