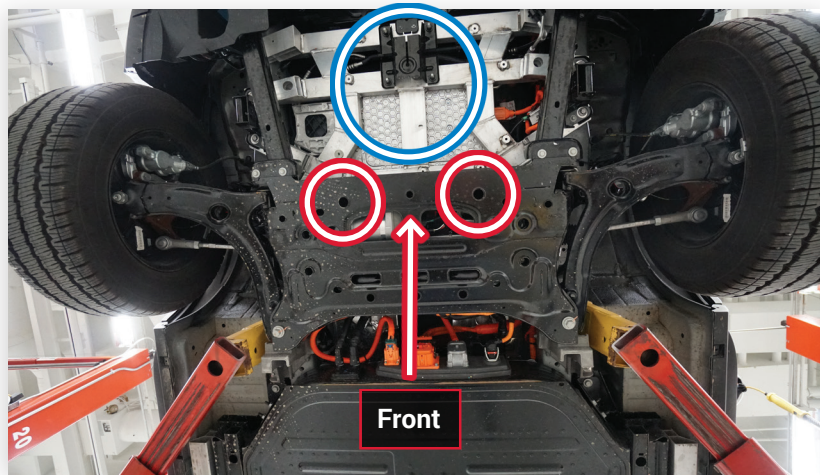


# 2022 Ford E-Transit

## Towing & Neutral Mode



**Prior to activating "Neutral Mode," make all connections to Tow Vehicle to prevent roll away.**



Make connections to the disabled E-Transit at the holes circled in White & Red  
Short & Long Body variants will have a Spare Tire mounted in place of the White & Blue Circle

**There are 2 pathways to shift E-Transit to neutral for loading to a Rollback Tow Truck**



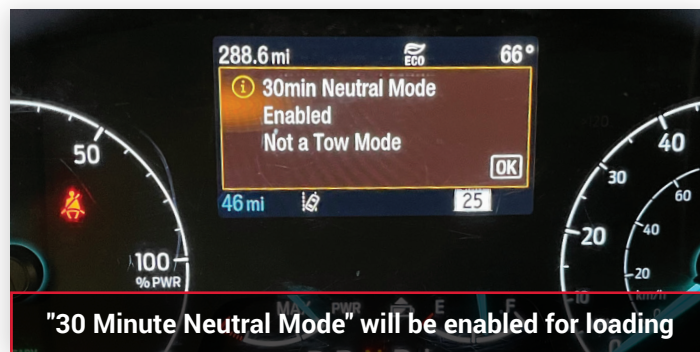
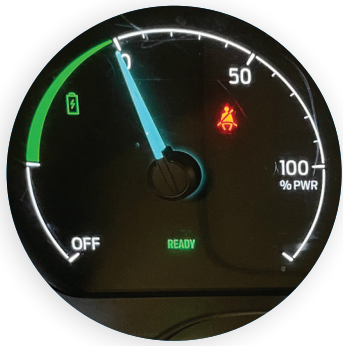
Press "START" button on right side of steering column



Green "READY" light



NO Green "READY" light



To turn off "Neutral Mode" place vehicle back Park  
Select Park and set Park Brake during Transport

