

# 2022 Ford E-Transit

## Over the Air (OTA) Update Failure



E-Transit vehicles may fail to update. During these events the vehicle could be rendered inoperable and require towing to a supporting Ford Dealership.

If the vehicle's 12 Volt system is active (charged) and grants access through the Driver's door proceed to **Towing & Neutral Mode**

### Entry and Jump Starting vehicle with dead 12 Volt Battery



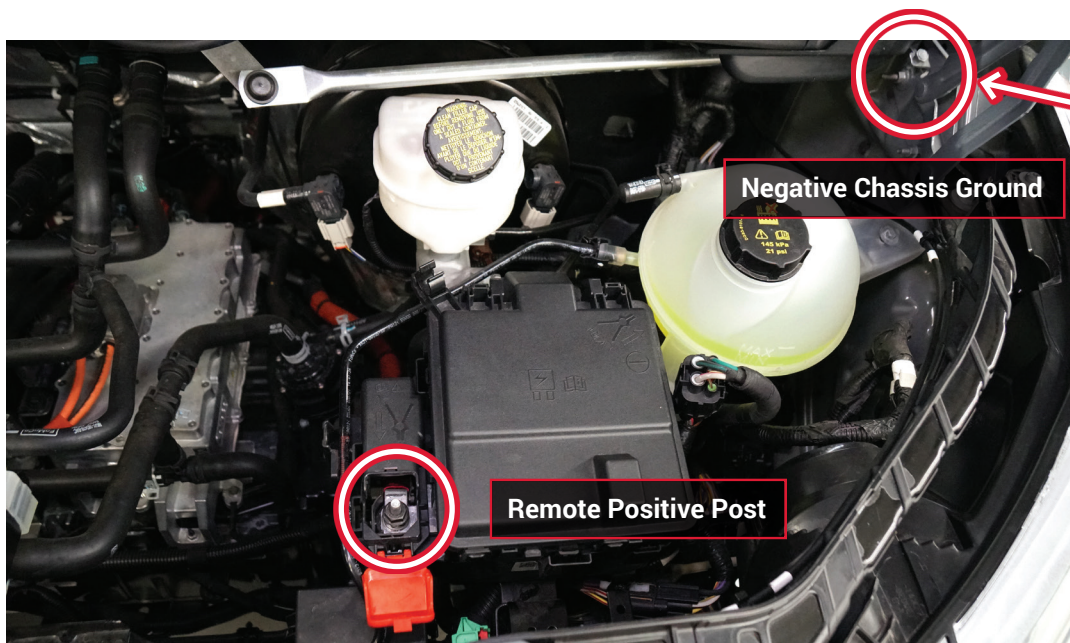
Press button on front of Key Blade (A)  
to remove mechanical key blade (B)



Insert Key Blade in Lock Cylinder  
Rotate Counter Clockwise, pull handle to open



Hood Release is in Driver Side kick panel

**Jump Start connection sequence:**

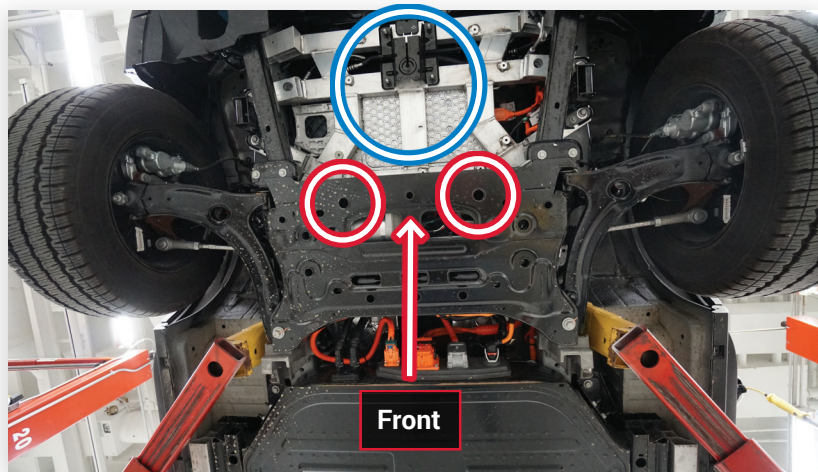
1. Connect to Positive Remote Jump Post of discharged E-Transit
2. Connect to Positive of Donor Vehicle
3. Connect to Negative of Donor Vehicle
4. Connect to Negative Chassis Ground of discharged E-Transit
5. Verify E-Transit is in **Park**
6. Allow several minutes for Donor Vehicle to charge 12 Volt of E-Transit
7. Switch on Drive Mode by pressing "**START**" button on dash
8. Leave both vehicles connected for 3 minutes

**DO NOT TURN ON HEADLIGHTS WHILE DISCONNECTING CABLES, PEAK VOLTAGE CAN DAMAGE THE BULBS**

9. Disconnect cables in reverse order

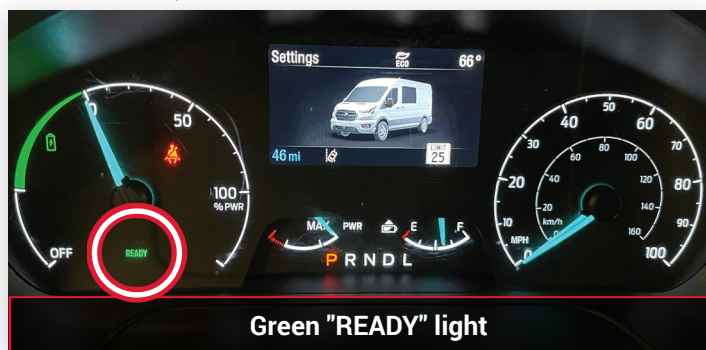
## Towing & Neutral Mode

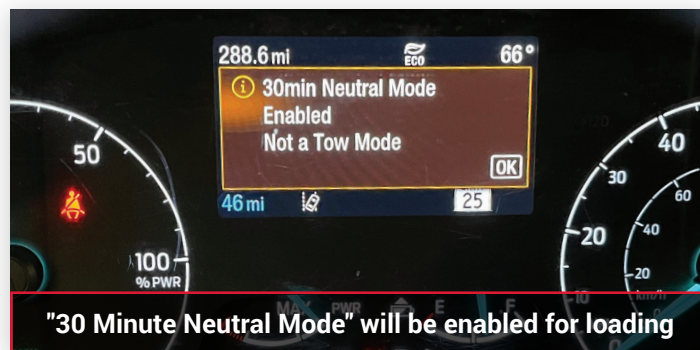
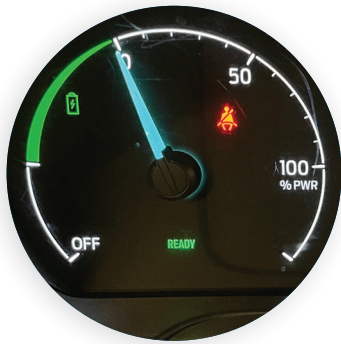
**Prior to activating "Neutral Mode," make all connections to Tow Vehicle to prevent roll away.**



Make connections to the disabled E-Transit at the holes circled in White & Red  
Short & Long Body variants will have a Spare Tire mounted in place of the White & Blue Circle

**There are 2 pathways to shift E-Transit to neutral for loading to a Rollback Tow Truck**





To turn off **"Neutral Mode"** place vehicle back **Park**  
**Select Park and set Park Brake during Transport**

