

2021–2024 Polestar 2

Tow Mode & Towing



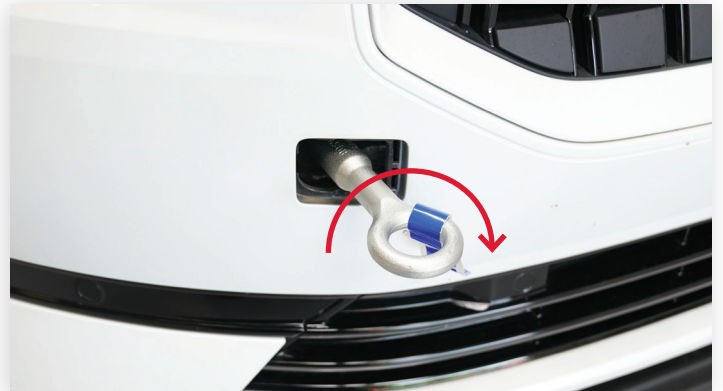
***Vehicles with no 12 Volt Power, see “Emergency Entry & 12 Volt Jump Start” Tip Sheet
Prior to activating “Tow Mode” make all connections to Tow Vehicle to prevent roll away.**



Tow Eyelet is located in the Front Trunk in the Roadside Tool Kit.



To remove Front Tow Eyelet Cover press in on the left side of Eyelet Cover. There is no retention tether. Store in safe location to prevent damage.



Tow Eyelet is right hand threaded. Install clockwise until its fully seated in the bumper beam.



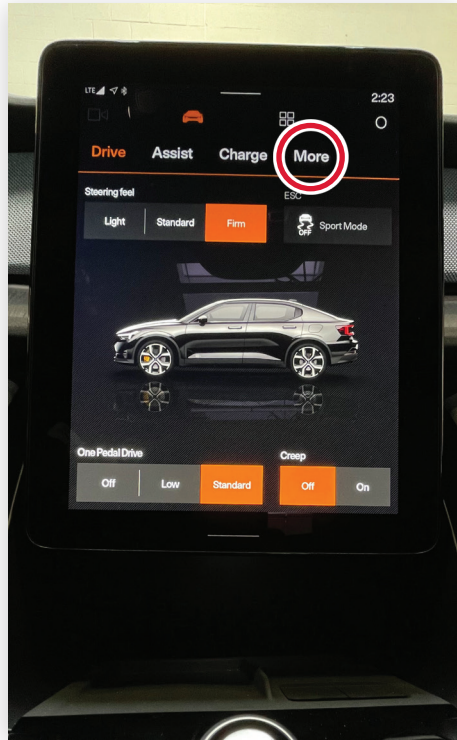
To remove Rear Tow Eyelet Cover lift from bottom with plastic trim tool. There is no retention tether. Store in safe location to prevent damage.



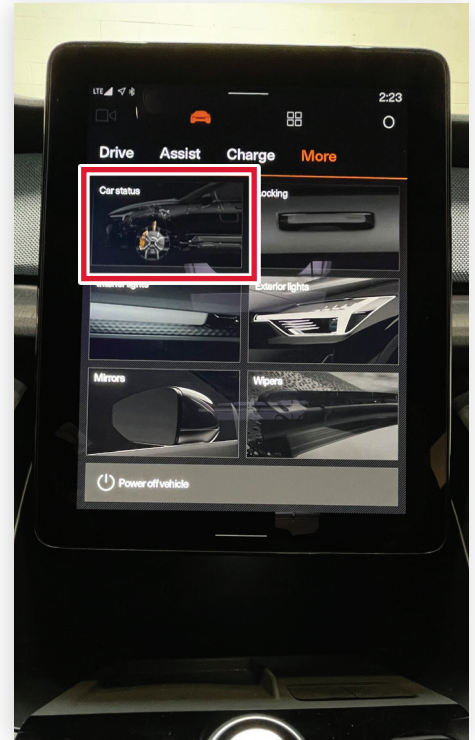
Tow Eyelet is right hand threaded. Install clockwise until its fully seated in the bumper beam.



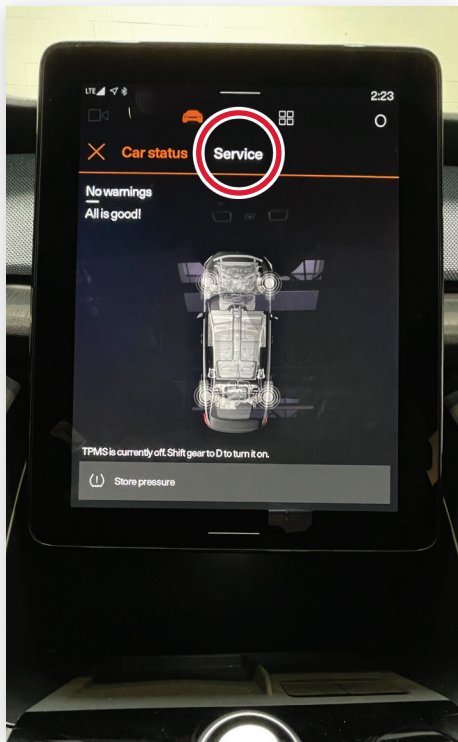
From any screen tap "Vehicle" Icon



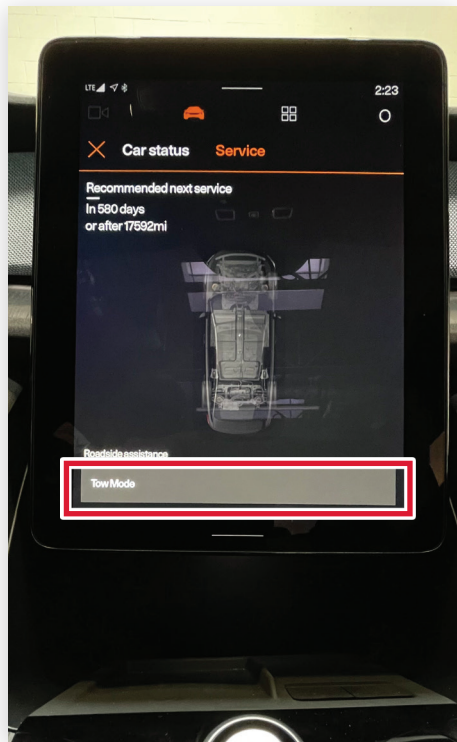
Tap "More"



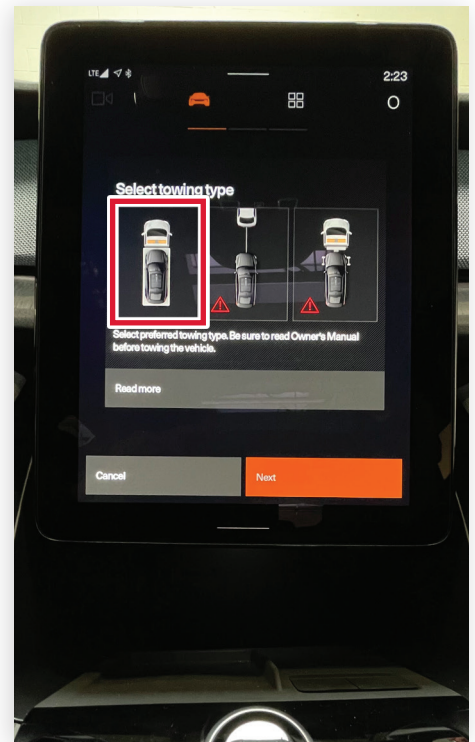
Tap "Car Status"



Tap "Service"

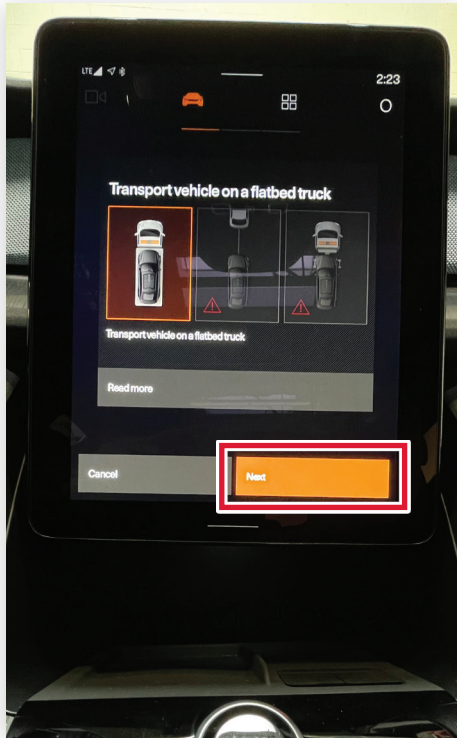


Tap "Tow Mode"

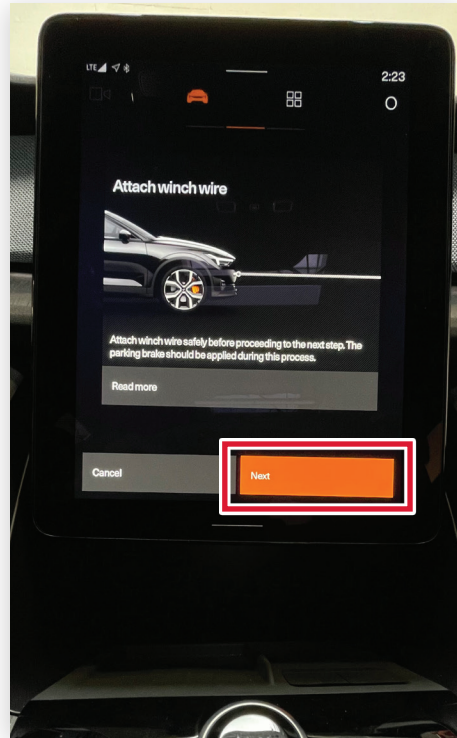


Tap Rollback Towing image

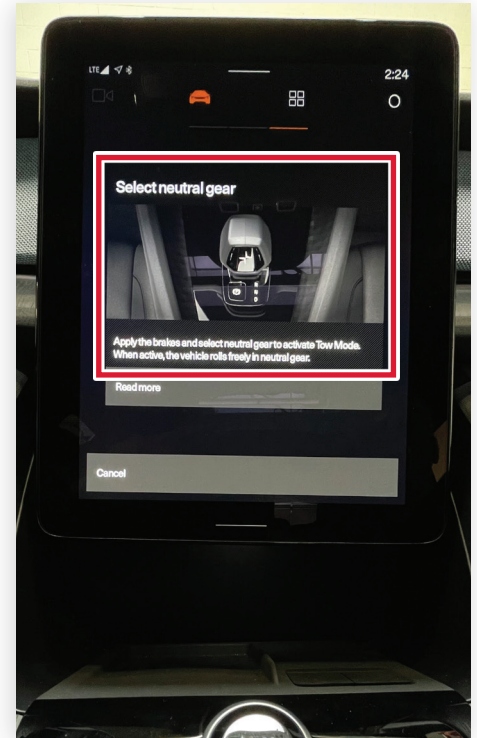




Tap "Next"



If connections have not been made, now is the time. Tap "Next"



Depress brake and shift to Neutral

When Polestar 2 is placed in "Tow Mode" it will remain in neutral until shifted back to Park (P). "Tow Mode" does not time out. To prevent discharging of 12 Volt battery, shift to Park (P) when loaded.

Vehicle must be transported and retained using an 8 Point Tie Down Kit

